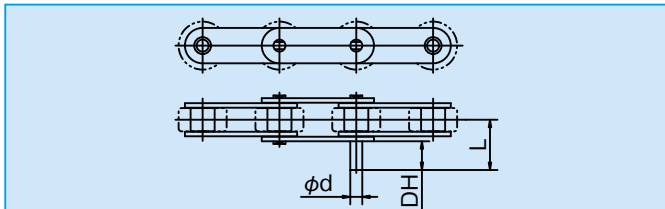


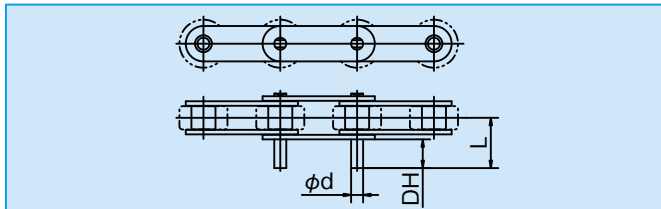
EP Attachments



2P EP Attachments



1P EP Attachments

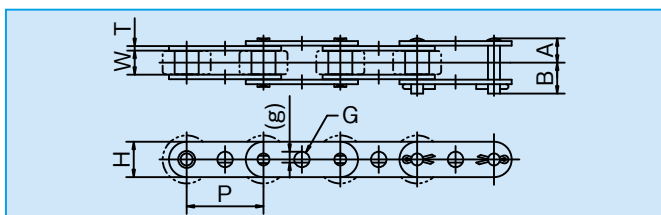
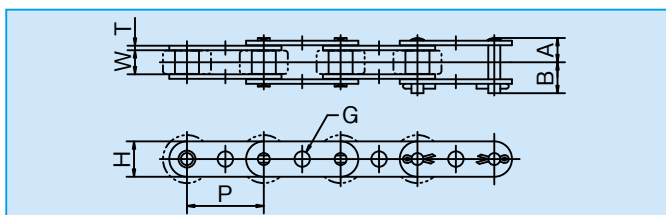


G Attachments

The G attachment is a link plate having a hole at midpoint.

Two roller chains with G-type attachments are arranged wide in parallel, using pins or bars engaged in the midpoint holes.

(NOTE: When used with the R-type roller chains, pay attention to the sprockets.)



○ Dimensions

[Unit: mm]

KCM Chain No.	Pitch P	Width between Inner Plates W	Roller Dia. D	Pin			Link Plate		Standard/Rustop (N)		Stainless steel (SS)		Links of 1 unit	
				Dia. d	A	B	Thickness T	Height H	Ave. Ave. Tensile Strength kN (kgf)	Max. Allowable Load kN (kgf)	Approx. Weight (kg/m)	Max. Allowable Load kN (kgf)		Approx. Weight (kg/m)
KCM C2040 KCM C2042	25.40	7.95	7.92 15.88	3.97	8.05	9.60	1.5	11.7	17.2(1,750)	2.65(270)	0.48 0.82	0.44(45)	0.49 0.83	120
KCM C2050 KCM C2052	31.75	9.53	10.16 19.05	5.09	10.15	11.65	2.0	14.6	27.9(2,850)	4.31(440)	0.79 1.25	0.69(70)	0.83 1.28	96
KCM C2060 KCM C2062	38.10	12.70	11.91 22.23	5.96	12.70	15.40	2.4	17.5	39.5(4,000)	6.28(640)	1.12 1.79	1.03(105)	1.19 1.88	80
KCM C2060H KCM C2062H	38.10	12.70	11.91 22.23	5.96	14.25	15.75	3.2	17.5	39.5(4,000)	6.28(640)	1.43 2.11	1.03(105)	1.46 2.14	80
KCM C2080 KCM C2082	50.80	15.88	15.88 28.58	7.94	16.15	19.25	3.2	23.0	68.6(7,000)	10.69(1,090)	1.88 2.92	1.77(180)	2.08 3.13	60
KCM C2080H KCM C2082H	50.80	15.88	15.88 28.58	7.94	17.70	20.80	4.0	23.0	68.6(7,000)	10.69(1,090)	2.37 3.41	1.77(180)	2.44 3.50	60
KCM C2100H KCM C2102H	63.50	19.05	19.05 39.67	9.54	21.75	24.70	4.8	28.9	106.9(10,900)	17.06(1,740)	3.53 5.68	2.55(260)	3.74 5.98	48
KCM C2120H KCM C2122H	76.20	25.40	22.23 44.45	11.11	26.85	30.25	5.6	35.0	149.1(15,200)	23.93(2,440)	4.75 7.40	—	—	40

NOTE: Connecting links for the C2080 or larger models use split pins.

○ Dimensions

[Unit: mm]

KCM Chain No.	D Attachments		G Attachments				Additional Weight per Attachment (kg)	
	DH	L	G (g)				2P EP	1P EP
KCM C2040 KCM C2042	9.5	16.65	4.1	5.1	6.1	6.5(5.5)	0.0009	0.0018
KCM C2050 KCM C2052	11.9	20.95	5.1(4.1)	6.1(5.1)	6.5	8.1(7.1)	0.0017	0.0034
KCM C2060 KCM C2062	14.3	25.65					0.003	0.006
KCM C2060H KCM C2062H	14.3	27.25	4.1	6.1(5.1)	7.9	8.1(7.1)	0.003	0.006
KCM C2080 KCM C2082	19.0	33.6					0.007	0.014
KCM C2080H KCM C2082H	19.0	35.2	8.1(7.1)	9.1(8.1)	10.1(8.6)	12.1(10.3)	0.007	0.014
KCM C2100H KCM C2102H	23.8	43.25	12.2(10.2)				0.012	0.024
KCM C2120H KCM C2122H	28.6	52.85	16.2(14.2)				0.020	0.040

NOTE: KCM attachment chains are available in stainless steel in the same dimensions.